



Diagnostic Records and Next Steps

Records Appointment



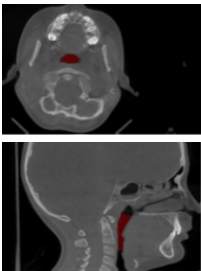
Photos

We take photos of your child's face and side profile as well as intraoral photos. These photos will capture features of jaw and facial growth, teeth position and contribute to proper treatment planning.



Measurements

These measurements are taken inside the mouth and face to record key features of growth.



3D Scan—Cone Beam Computed Tomography (CBCT)

This is taken much like a panoramic image but shows in three dimensions much more detail of the cranium, sinuses, airway and teeth. We can obtain several views with one CBCT including the Ceph, Pan, and Airway all with one low-radiation exposure.



Preliminary Myofunctional Exam

We perform a preliminary evaluation to reveal how your child is posturing the tongue, lips, and head.



Case Presentation

This appointment will be scheduled after the records appointment is completed. Dr. Aleagha will create and share a presentation specifically for your child to discuss treatment options and finalize a plan. We recommend having only guardians or caregivers come to this visit to assure that we have your undivided attention as there will be a lot of information presented regarding your child's health, growth, and treatment options.

REFERRALS



Depending on the needs of your child, we may recommend referrals to an ENT (Ear, nose, and throat) physician, myofunctional therapist, speech therapist, or sleep medicine doctor prior to starting our airway orthodontic treatment.